

Quality Structured VINYL AND WOOD STORAGE SHEDS



Custom-Built for All Types of Storage Purposes

Welcome



This busy life is ever-changing, and it seems to be more so each day. All of us are given exactly the same amount of time, 24 hours in a day, 1,440 minutes, or 86,400 seconds to do all the much-needed things in life. We work, eat, sleep, enjoy life, take time to relax. Consider making wise use of your time by ordering or purchasing a welcome addition to your property – a garage or storage shed.

If you are looking for a well-built, good quality structure, we have many style, size and color options to choose from to meet your needs and wants. *(See our customization options on pages 27-29)* Our structures feature quality construction throughout, and will stand the test of time. *(Learn about our construction specifications on pages 30-31)*

Spend some time browsing through the following pages to choose a structure that is just right for you. Take a much-needed deep breath; relax and enjoy!

Shed on Front Cover:

10'x16' MANSION 6" LAP SIDING

Shown with optional stone front

Clay • Clay Trim • Slate Roof • Avocado Doors & Window Trim

It was a pleasure working with you again this year. We really appreciate you going above and beyond! We are very thankful to be working with such a quality builder. We also like how you provide great customer service. You are our favorite supplier by far.

Thanks Again!

Jamie



8'x16' P.S.L.

Portable Storage Locker

INDEX

Cape Cods	3
Board and Batten	4
A-Frames	5
Deluxes	6-7
Mansions	8-9
Dutches & Mini-Barns	10-11
Classics	12-13
Studios & Lean-to's	14
Quakers & Potting Shed	15
Cabins, Colonials, & Colonial Classics	16-17
Doublewide Garages	18-19
1½-Story Keystones	20-21
Alpines	22
Carlises	23
6" Lap Siding	24-25
Economy Series	26
Options	27-29
Specifications	30-31
Color Options	32

CAPE CODS

Standard Features:

- * 1x6 Miratec Fascia
- * 7' Side Walls (6'9" inside wall heights)
- * Double German Doors
- * Picture Windows in Door
- * 2 - 18"x36" or 24"x36" Windows
- * German Shutters
- * 1x3 Miratec Corners



10'x18' CAPE COD DORMER

Dark Gray • Light Gray Trim • Pewter Roof
1x4 Window Trim Instead of Shutters



10'x16' CAPE COD INSET DORMER

Shown with optional flower boxes, end vents and 11-lite panel door (doors and windows can be placed where ever you want)
Clay • White Trim • Black Roof
Green Shutters & Doors



10'x14' CAPE COD

Shown with optional flower boxes and end vents
Lite Gray • White Trim
Black Roof
Blue Shutters & Doors



12'x16' CAPE COD

Shown with optional end vents
Clay • Navajo White Trim • Black Roof • Green Shutters



8'x14' CAPE COD

Beige • Beige Trim • Blue Metal Roof
Blue Shutters & Doors

BOARD AND BATTEN

Board and Batten Can Be Used
on Any Style Building

These sheds are made with panels of LP No Groove Smartside and 1x3 Miratec battens on every stud (16" on center)

LP No Groove Smartside is an engineered wood product that is treated with waxes, zinc borate and binders to resist:

- Fungal Rot and Decay
- Termites
- Delamination
- Splitting and Cracking
- Warping



10'x14' QUAKER CLASSIC BOARD AND BATTEN

Shown with optional end vents and picture windows in doors

Chestnut (Urethane Paint) • Chestnut (Urethane Paint) Trim • Weatherwood Roof



12'x20' DUTCH BOARD AND BATTEN

Shown with optional end vents, and picture windows in doors

Driftwood (Urethane Paint)
Driftwood (Urethane Paint) Trim
Pewter Roof



12'x 20' A-FRAME CLASSIC BOARD AND BATTEN

Shown with optional end vents, picture windows, and additional single door

Ebony (Urethane Paint)
Ebony (Urethane Paint) Trim
Slate Roof

Board and batten sheds come standard with Miratec corners, 1x3 window trim instead of shutters, and mansion doors.



12' x 24' A-FRAME GARAGE VINYL

Shown with optional end vents, diamond door plate, picture windows, & double doors instead of single door

Autumn Tan • White Trim
Shakewood Roof
White Shutters & Doors

A - F R A M E S

Standard Features:

- * 6'6" Side Walls
(6'3" inside wall heights)
- * Double German Doors
- * 2 - 18"x27" or 24"x27" Windows
- * Louvered Shutters
- * Metal Corners

A-Frame Garages:

- * 7' Side Walls
(6'9" inside wall height)
- * Single German Door



12' x 24' TRIPLE DORMER A-FRAME

Shown with optional end vents, flower boxes, & 11-lite door

Red • White Trim
Black Roof



12' x 22' A-FRAME GARAGE

Shown with optional end vents & double doors instead of single door

Navajo White
Navajo White Trim
Fox Hollow Roof
Black Shutters & Doors



12' x 20' VINYL A-FRAME

White • Black Trim • Pewter Roof



10' x 14' VINYL A-FRAME

Shown with optional end vents

Wicker • Navajo White Trim • Shakewood Roof



10' x 12' A-FRAME

Lite Blue • Dark Blue Trim • Blue Roof

Vinyl sheds come standard with solid fiberglass panel or mansion doors, and vinyl or Miratec corners.

DELUXES



10'x16' DUTCH DELUXE

Shown with optional wood vents and ramp

Red • White Trim • Black Roof & Shutters

DELUXES

Standard Features:

- * 1x6 Miratec Fascia
- * Double Mansion Doors
- * Picture Windows in Doors or above doors
- * 6" Black Hinges
- * Diamond Door Plate
- * 2 – 18"x36" or 24"x36" Windows
- * 1x3 Window Trim
- * German Shutters
- * 1x4 Miratec Corners
- * 2 – 8"x16" Metal Vents



10'x18' QUAKER DELUXE

Lite Gray • White Trim • Black Roof & Shutters



10'x16' CAPE COD DELUXE

Shown with optional flat dormer and optional flower boxes

Beige • White Trim • Shakeswood Roof
Green Shutters & Doors



10'x16' CAPE COD DELUXE

Shown with optional wood shake in gable, and additional single mansion door with window

Clay • Avocado Trim • Weatherwood Roof
Red Doors & Shutters • Almond Wood Shakes



10'x20' DUTCH/DELUXE GARAGE

Shown with optional wood vents

Clay • Almond Trim • Weatherwood Roof



8'x12' DUTCH DELUXE

Shown with additional single door, arched trim, wood vents, & fancy hinges

Clay • Navajo White Trim
Weatherwood Roof
Red Doors & Window Trim

Garages come standard with a single mansion door, and a homestead garage door.

MANSIONS



10'x16' MANSION

Shown with optional 3' door with window, wood vents, and flower boxes
Khaki • White Trim • Hickory Roof • Green Doors & Shutters



10'x18' MANSION DORMER

Shown with optional Miratec Flower Boxes
Khaki • Navajo White Trim • Black Roof • Red Shutters & Flower Boxes

MANSIONS

Standard Features:

- * 1x6 Miratec Fascia
- * Vinyl Soffit (vented in eaves)
- * Double Mansion Doors
- * Picture Window in Doors
- * 12" Fancy Hinges
- * Diamond Door Plate
- * 2 - 18"x36" or 24"x36" Windows
- * 1x3 Window Trim
- * German Shutters
- * 1x4 Miratec Corners
- * 2 - 8"x8" Metal Vents



10' x 16' MANSION

Shown with optional flower boxes

Pewter Siding • White Trim • Fox Hollow Gray Roof
Blue Doors & Shutters



10' x 18' MANSION GARAGE

Sand • White Trim • Weatherwood Roof
Green Shutters & Doors



10' x 18' CABIN MANSION

White • White Trim • Black Roof & Shutters

Standard with all cabin features plus
composite decking and 22" Ellsworth cupola.



10' x 10' COTTAGE MANSION

*Shown with optional 11-lite doors,
and 30"x36" windows*

White • Lite Gray Trim • Pewter Roof



8' x 14' QUAKER MANSION

Shown with optional flower boxes

Sand • Clay Trim • Black Roof
Black Shutters & Flower Boxes



10' x 24' MANSION TRIPLE DORMER

*Shown with optional wood vents, Miratec flower boxes,
& additional single door*

Sand • White Trim • Shakewood Roof
Red Doors, Shutters & Flower Boxes

*Garages come standard with a single
mansion door and a homestead garage door.*

DUTCHES



10'x18' DUTCH VINYL

Shown with 24"x36" windows, mansion doors with windows, German shutters, and end vents

White • Black Trim • Black Roof & Shutters

DUTCHES • MINI-BARN S



10'x16' DUTCH

Shown with optional end vents

Clay • Green Trim
Weatherwood Roof



10'x12' MINI-BARN – 5' WALLS

Avocado • Almond Trim • Shakewood Roof



10'x14' MINI-BARN – 6' WALLS

Shown with optional picture windows above doors
Coffee • Beige Trim • Shakewood Roof



14'x24' DUTCH GARAGE

Shown with optional end vents, and 1x3 window trim instead of shutters

Lite Gray • White Trim • Fox Hollow Roof



12'x24' DUTCH GARAGE – VINYL

Shown with optional diamond door plate, larger windows, German shutters, Miratec flower boxes, & double doors instead of single door

Beige • Red Trim • Hickory Roof

Dutches Standard Features:

- * 6'6" Side Walls (6'3" inside wall heights)
- * Double German Doors
- * 2 – 18"x27" or 24"x27" Windows
- * Louvered Shutters
- * Metal Corners

Mini-Barns:

- * 1 – 18"x27" or 24"x27" Window with no Shutters
- * 4' Side Walls (3'9" inside wall heights)
- * 5' Side Walls (4'9" inside wall heights)
- * 6' Side Walls (5'9" inside wall heights)

Vinyl sheds come standard with fiberglass panel or mansion doors, and vinyl or Miratec corners.

Garages come standard with a single German door.

CLASSICS



12'x20' DUTCH CLASSIC

Shown with optional flat dormer, end vents, additional 3' door with window, and windows above double doors, 1x3 window trim instead of German shutters

Red • Red Trim • Black Roof



10'x14' DUTCH CLASSIC

Shown with optional wood vents

Avocado • Navajo White Trim • Slate Roof

A-Frame Classics have 7' side walls (6'9" inside wall heights)



12' x 18' A-FRAME CLASSIC

Shown with optional end vents, and 1x3s around windows

Lite Gray • White Trim • Black Roof • Blue Shutters



10' x 14' QUAKER CLASSIC

Shown with optional end vents

Almond • White Trim • Black Roof, Doors & Shutters

CLASSICS

Standard Features:

- * 1x6 Miratec Fascia
- * Double German Doors
- * 2 – 18"x36" or 24"x36" Windows
- * German Shutters
- * 1x3 Miratec Corners



10' x 16' A-FRAME CLASSIC DORMER

Shown with optional end vents

Red • Black Trim
Black Roof



12' x 24' A-FRAME/CLASSIC TRIPLE DORMER

Shown with optional wood vents, 1x3 window trim, mansion doors, picture windows, fancy hinges, 2 octagons and 1 half round window instead of diamonds.

Lite Gray • White Trim
Pewter Roof • Black Shutters



12' x 24' A-FRAME/CLASSIC GARAGE – VINYL

Shown with optional 4'x8' ramp, end vents, picture window in door, homestead garage door, fancy hinges, & 1x3 window trim

Mist • Navajo White Trim • Slate Roof • Navajo White Doors & Shutters



12' x 24' A-FRAME/CLASSIC GARAGE

Shown with optional homestead 2-lite cascade garage door, end vents, and 1x3s around windows

Avocado • Almond Trim • Slate Roof
Almond Doors & Shutters

Garages come standard with a single German door.

STUDIOS

Standard Features:

- * 6'6" Low Wall (6'3" inside wall height)
- * 1x6 Miratec Fascia
- * Double Mansion Doors
- * Picture Windows in Doors or Above Doors
- * 2 – 18"x36" or 24"x36" Windows
- * 1x4 Window Trim
- * 1x4 Miratec Corners
- * 2 – Metal End Vents
- * Diamond Door Plate
- * Ice & Water Guard Under Shingles
- * 6' Wides have 2x4 Rafters
- * 8', 10' and 12' Wides have 2x6 Rafters



LEAN-TOS

Standard Features:

- * All Lean-tos Have Ice & Water Guard Under Shingles
- 4' and 5' Wides have:**
 - * 5' Low Wall (4'9" inside wall heights)
 - * Double German Doors
 - * 2 – Metal End Vents
- 6', 8', 10', and 12' Wides have:**
 - * 6'6" Low Wall (6'3" inside wall heights)
 - * 24"x27" Windows
 - * Double German Doors
 - * 2 Sets Louvered Shutters or 1x3 Window Trim
 - * 2 – 18"x27" or
 - * 4', 5', and 6' Wides have 2x4 Rafters
 - * 8', 10', and 12' Wides have 2x6 Rafters



10'x12' STUDIO DELUXE

Shown with optional 1-lite panel doors, windows without grids, and two additional picture windows
Navy • White Trim • Black Roof



6' x 10' LEAN-TO
Light Gray • White Trim
Pewter Roof

8'x12' STUDIO DELUXE

Dark Gray • Black Trim • Black Roof
Light Gray Doors



8'x10' STUDIO MANSION

Shown with one additional picture window
White • Black Trim • Black Roof



6'x10' LEAN-TO – VINYL
Almond • White Trim • Weatherwood Roof

Vinyl sheds come standard with fiberglass panel or mansion doors.

POTTING SHED

Standard Features:

- * 7'6" & 6'3" Side Walls
(7'3" & 6' inside wall heights)
- * Double and Single German Doors
- * 1 Full Wall Plus
3 – 24"x36" Windows
- * 1x3 Window Trim
- * Metal Roof
- * Poly Skylight
- * 1x3 Miratec Corners
- * 2 – 8"x16" Vents
- * Treated Floor Plywood
- * Treated 32" Work Bench
(length of shed)



10' x 14' POTTING SHED

Navy • Navajo White Trim • Black Metal Roof

POTTING SHED DELUXE

Same features as the Potting Shed Plus:

- * 6" Higher Side Walls
- * 1x6 Miratec Fascia
- * Double and Single Mansion Doors
- * Picture Windows in Doors
- * 1x4 Miratec Corners
- * Diamond Door Plates
- * Overhang Like Cape Cod Deluxe



10' x 16' POTTING SHED DELUXE

Avocado • Clay Trim • Brown Metal Roof

QUAKERS

Standard Features:

- * 7'6" & 6'3" Side Walls
(7'3" & 6' inside wall heights)
- * Double German Doors
- * 2 – 18"x27" or 24"x27" Windows
- * Louvered Shutters
- * Metal Corners



8' x 12' QUAKER

Shown with optional end vents, & 1x3 window trim instead of shutters

Charcoal
Navajo White Trim
Hickory Roof



10' x 16' QUAKER – VINYL

Shown with optional end vents, cupola, flower boxes, & 1x3 window trim

Sand • Green Trim • Weatherwood Roof

Vinyl sheds come standard with solid fiberglass panel or mansion doors, and vinyl or Miratec corners.

CABINS



10'x16' CABIN

Shown with optional flower boxes

Lite Gray • White Trim • Black Roof & Shutters

CABINS

Standard Features:

- * 1x6 Miratec Fascia
- * 7' Side Walls
(6'9" inside wall heights)
- * 4'x8' Porch
- * Arches Between Posts
- * Double German Doors
- * Picture Windows in Doors
- * 11-lite Fiberglass Door – Single
- * 3 – 18"x36" or 24"x36" Windows
- * German Shutters
- * 1x3 Miratec Corners
- * 21" Cupola



12' x 24' CABIN WITH 6'x12' PORCH

Shown with optional composite decking, diamond window, & end vents

Almond • Clay Trim
Weatherwood Roof • Red Shutters
(Standard) Double German Doors with Picture Windows in Back Wall

COLONIALS

Standard Features:

- * 6'6" Side Walls
(6'3" inside wall heights)
- * 3 – 18"x27" or 24"x27" Windows
- * Double German Doors
- * Louvered Shutters
- * Single German Door
- * 21" Cupola
- * 4'x8' Porch
- * Metal Corners



12' x 20' COLONIAL

Shown with optional end vents, & Miratec Corners

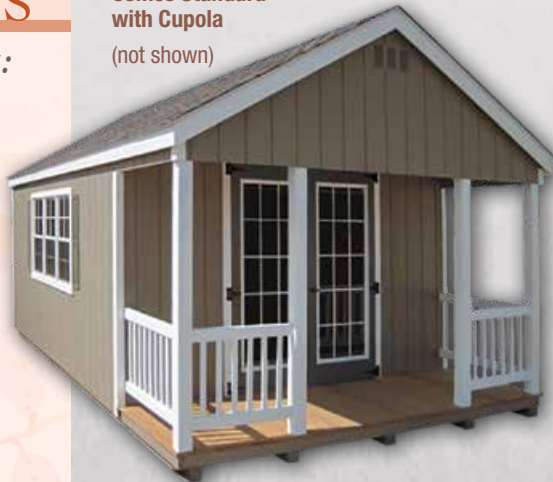
Clay • White Trim • Weatherwood Roof
Dark Gray Shutters



COLONIAL CLASSICS

Standard Features:

- * 1x6 Miratec Fascia
- * 7' Side Walls
(6'9" inside wall heights)
- * Double German Doors
- * Single German Door
- * 4'x8' Porch
- * 3 – 18"x36" or 24"x36" Windows
- * German Shutters
- * 1x3 Miratec Corners
- * 21" Cupola



12' x 20' COLONIAL CLASSIC WITH 4'x12' PORCH

Shown with optional double 15-lite panel doors (painted), end vents, 1x3 window trim. Also included, but not shown in photo: standard 3' door, & cupola

Clay • White Trim • Weatherwood Roof • Avocado Shutters & Doors



10' x 18' COLONIAL

Shown with optional end vents, larger windows, German shutters, flower box, picture windows, & 11-lite door

Lite Gray • White Trim • Black Roof • Black Shutters & Flower Box

DOUBLE WIDE MANSION GARAGE

Standard Features:

- * 1x6 Miratec Fascia
- * 7'4" Side Walls
(7'1" inside wall heights)
- * 2 - 9'x7' Homestead
Garage Doors
- * 2x6 Rafters Every 12"
- * Double Mansion Doors
or Single 11-lite Door
- * Picture Windows
in Doors
- * 12" Fancy Hinges
- * Diamond Door Plates
- * 4 - 24"x36" Windows
- * 1x3 Window Trim
- * German Shutters
- * 1x4 Miratec Corners
- * Felt Paper Under Shingles
(3' ice & water guard on
eave of roof)
- * 4 - 8"x8" Metal Vents



24'x24' DOUBLE WIDE MANSION GARAGE

Shown with optional ramps, & ridge vent

Sand • White Trim • Weatherwood Roof • Green Shutters



Interior of Double Wide Garage

DOUBLE WIDE GARAGE



24'x24' DOUBLE WIDE GARAGE

Shown with optional ramps
Green • White Trim • Black Roof

Standard Features:

- * 7'4" Side Walls (7'1" inside wall heights)
- * 2 – 9'x7' Steel Garage Doors
- * Double German Doors or Single 11-lite Door
- * 2x6 Rafters Every 12"
- * 4 – 24"x27" Windows
- * Louvered Shutters
- * Felt Paper Under Shingles (3' ice & water guard on eave of roof)

24'x24' DOUBLE WIDE GARAGE – VINYL

Shown with optional end vents, larger windows, 1x3 window trim, & German shutters
Stone Gray • White Trim • Fox Hollow Roof • Blue Shutters



1½ - STORY KEYSTONES



12'x20' KEYSTONE 1½-STORY KEYSTONE / DORMER

Shown with optional dormer, cupola, wood vent, flower boxes, above-door windows, and extra windows above windows

Red • Navajo Trim • Black Roof & Shutters

1½ - STORY KEYSTONES



12'x24' KEYSTONE GARAGE

Shown with optional end vents, small window in peak, homestead garage door, & 11-lite door instead of 3' mansion door
 Avocado • Almond Trim • Weatherwood Roof



*Interior of Keystone Garage
 (optional stairs, loft, & railing)*



*Interior of Keystone Garage
 (optional loft & railing)*

Standard Features:

- * 1x6 Miratec Fascia
- * 12' & 14' Wide Keystones Have 8' Side Walls
- * 10' Wide Keystones Have 7' Side Walls
- * 12 Pitch Roof
- * Double Mansion Doors
- * 12" Fancy Hinges
- * 2 - 30"x36" Windows
- * 1x3 Window Trim
- * German Shutters
- * 1x4 Miratec Corners
- * 10' & 12' Wide Keystones are Shipped with Roof & Gables on Hinges
- * 14' Wide Keystones are Shipped with Roof & Gables Loose



10'x18' KEYSTONE DORMER

Shown with optional wood vent, arched trim, picture windows in doors, & halfround window instead of diamond window in dormer
 Navajo White • Charcoal Trim • Hickory Roof
 White Doors & Window Trim



*Interior of Keystone Garage
 (optional stairs)*

ALPINES

Standard Features:

- * 1x6 Miratec Fascia
- * 12" Fancy Hinges
- * 12' Wide Alpines Have 6' Side Walls (5'9" inside wall heights)
- * 9 Pitch Roof
- * 8' & 10' Wide Alpines Have 6'6" Side Walls (6'3" inside wall heights)
- * 2 - 18"x36" or 24"x36" Windows
- * Double Mansion Doors
- * 1x3 Window Trim
- * German Shutters
- * 1x4 Miratec Corners

6'9" walls and a shorter overhang needed for doors in side wall (Not available in 12' wide sheds)

14' wide Alpines have 8' side walls (7'9" inside wall heights)

They are shipped with roof and gables on hinges

10'x16' ALPINE

Shown with optional flat dormer, 2 windows in doors, and wood vents

Red • Red Trim • Hickory Roof



10'x20' ALPINE WITH 6'9" WALLS

Shown with optional 8' flat dormer, 30"x36" windows, Miratec flower boxes, diamond window, windows in doors, and ramp

Red • Navajo Trim • Black Roof • Black Shutters



8'x8' ALPINE

Shown with optional flat dormer, half round vents, & arched window trim

Charcoal • Millcreek Green Trim • Black Roof
Avocado Doors & Window Trim

CARLISLES

Standard Features:

- * 1x6 Miratec Fascia
- * 6'6" Side Walls
(6'3" inside wall heights)
- * Double Mansion Doors
- * Picture Windows in Doors
- * 12" Fancy Hinges
- * Diamond Door Plate
- * 2 – 18"x36" or 24"x36" Windows
- * 1x3 Window Trim
- * German Shutters
- * 1x4 Miratec Corners
- * 2 – 8x8 Metal Vents
- * Vinyl Soffit (vented in eaves)



10' x 16' CARLISLE

Pewter • White Trim
Black Roof & Shutters



10' x 20' CARLISLE GARAGE

Shown with optional wood vents

Stone Gray • Dark Gray Trim • Pewter Roof

Garages come standard with a single mansion door and a homestead garage door.

6" LAP SIDING



10'x16' MANSION 6" LAP SIDING

Shown with optional stone front

Clay • Clay Trim • Slate Roof • Avocado Doors & Window Trim

Lap Siding Can Be Used
on Any Style Building

6" LAP SIDING



10' x 16'
A-FRAME CLASSIC
6" LAP SIDING

Shown with optional end vents

Red • Clay Trim • Hickory Roof
Charcoal Doors & Window Trim

Lap siding is an engineered wood product that is treated with waxes, zinc borate and binders.

LAP SIDING RESISTS:

- Fungal Rot and Decay
- Termites
- Delamination
- Splitting & Cracking
- Warping



10' x 16' A-FRAME CLASSIC 6" LAP SIDING

Shown with optional stone front, & end vents

Charcoal • Charcoal Trim • Weatherwood Roof • Clay Doors & Window Trim



8' x 12' A-FRAME CLASSIC 6" LAP SIDING

Shown with optional wood vents, fancy hinges, & additional window

Dark Gray • Clay Trim • Weatherwood Roof • Red Doors & Window Trim

6" lap siding sheds come standard with 1x4 Miratec corners, 1x4 window trim instead of shutters, and fiberglass panel or mansion doors.

ECONOMY SERIES

Standard Features:

- * 12" on Center Floor Joists
- * 1/2" Floor Plywood
(5/8" floor plywood on garages)
- * Walls & Roof 2"x4"s 24" on Center
- * 7/16" Smartside Siding
- * 30-Year Architectural Shingles
- * 4' Wall Economy Barns have Peak over Doors, 2"x3" Framing, & No Windows



**12' x 24' ECONOMY
A-FRAME**

Shown with optional end vents & additional double doors
Light Gray • White Trim • Pewter Roof
Black Shutters

Smartside siding is an engineered wood product that is treated with waxes, zinc borate and binders.

SMARTSIDE RESISTS:

- Fungal Rot and Decay
- Termites
- Delamination
- Splitting & Cracking
- Warping



8' x 12' ECONOMY A-FRAME

Shown with optional 1x3 window trim instead of shutters
Coffee • Clay Trim • Weatherwood Roof



12' x 16' ECONOMY DUTCH

Clay • Green Trim • Weatherwood Roof



8' x 12' ECONOMY QUAKER

Red • White Trim • Black Roof



**8' x 14' ECONOMY
BARN 5' WALLS**

Shown with optional end vents
Millcreek Green • Navajo White Trim • Slate Roof



**8' x 12' ECONOMY
BARN 4' WALLS**

Light Gray • White Trim • Pewter Roof

DOOR OPTIONS

DOORS



German Doors



Doors with Xs



Economy Doors



Mansion Doors



Mansion Doors
Standard on Deluxes



Mansion Doors
Standard on Mansions & Carlises



3' Mansion Door
*Shown with windows,
12" fancy hinges and arched
trim*



Solid Fiberglass
Panel Doors



3' 1-Lite Fiberglass
Panel Door



3' 4-Lite Fiberglass
Panel Door



3' 9-Lite
Fiberglass
Panel Door



3' 11-Lite
Fiberglass
Panel Door



3' 15-Lite Fiberglass
Panel Door



3' 17-Lite Pre-Hung
Fiberglass Panel Door
*Shown with handle
knob door latch*



Regular Door Plate



Garage Door Plate

OVERHEAD GARAGE DOORS



Standard Style with Windows
or Solid



Homestead Style



Roll Up Door



Garage Door Opener

RAMPS



Standard Ramp



Heavy-Duty Garage Ramp

OPTIONS

WEATHER VANES



Painted Eagle



Eagle



Horse



Horse and Buggy



Rooster

CUPOLAS



21" Coppertone Top



21" Regular



22" Ellsworth Cupola

(Brown, Black, or Copper Top Available)



22" Carlisle Cupola

(Standard with Copper Top)

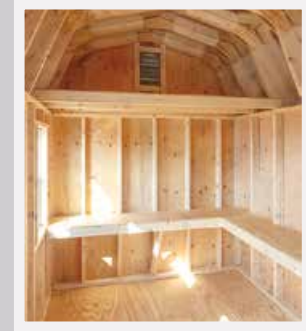
WOOD SHAKES IN GABLE



METAL ROOFS



LOFTS & WORK BENCHES



Loft with 2x4s or 2x6s

VENTS



8"x16" Vent



8"x8" Vent



Wood Vent



Garden Vent



Half Round Vent



Metal Ridge Vent



Roll On Ridge Vent

OPTIONS

WINDOWS



18"x27"



24"x27"



18"x36"



24"x36"



30"x36"



18"x23" Jalousie

SHUTTERS



Louvered Shutter



Raised Panel Shutter



German Shutters



60"x16"



24"x16"



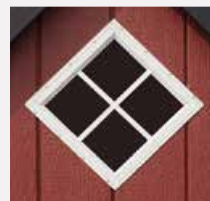
Picture Windows in Doors



Picture Windows Above the Doors



Half Round



Diamond



Octagon



72" Picture Window

WINDOW TRIM



1x4 Window Trim



1x3 Window Trim



Arched Window Trim



Triple Arched Window Trim

FLOWER BOXES



Miratec Flower Box



Vinyl Flower Box

CORNERS



1x3 Miratec Corners



1x4 Miratec Corners



Metal Corners



Vinyl Corners

Miratec is a treated exterior composite trim.

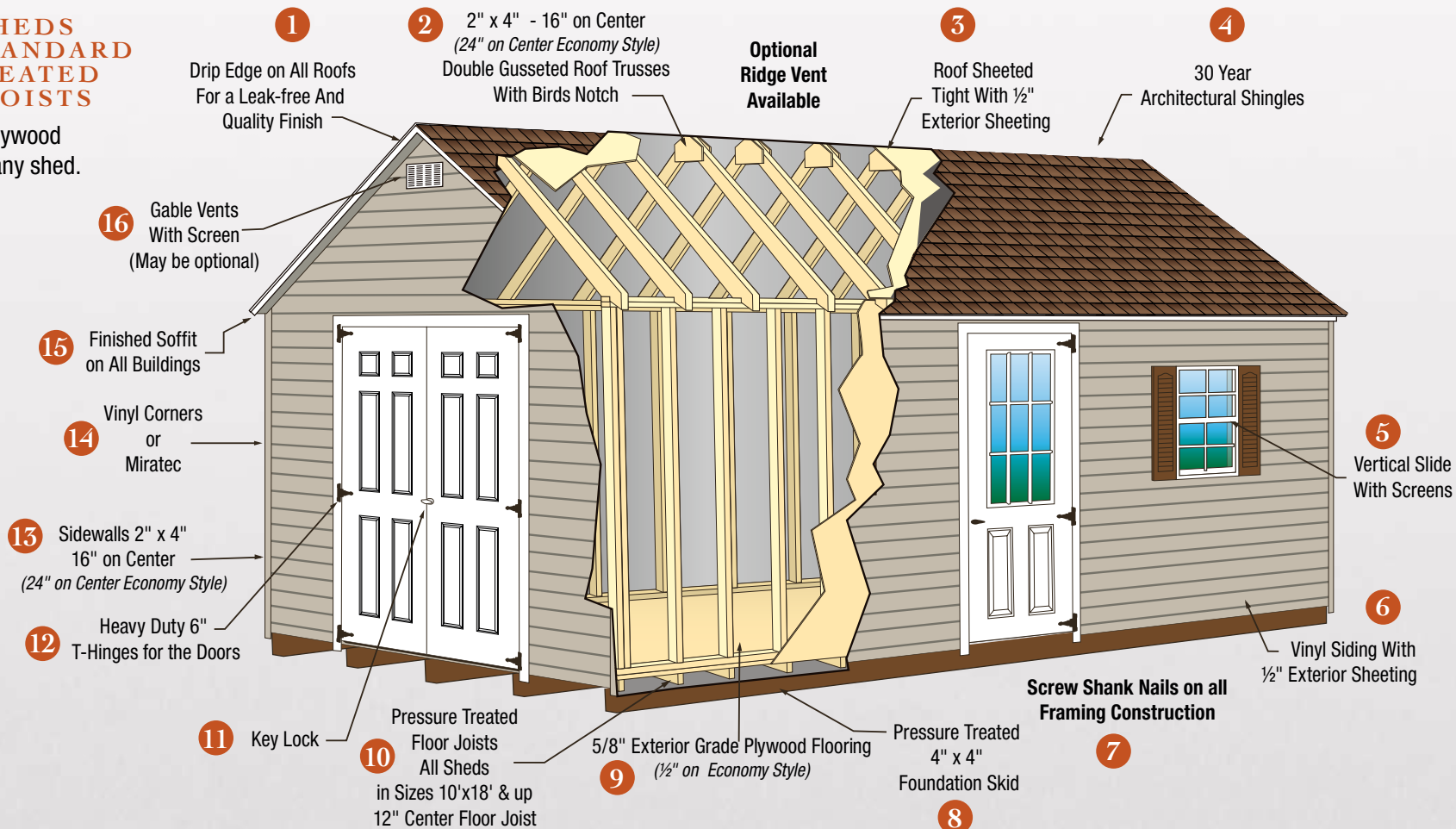
SPECIFICATIONS

Apply to All Sheds Except Economy Styles

VINYL SHEDS

VINYL SHEDS COME STANDARD WITH TREATED FLOOR JOISTS

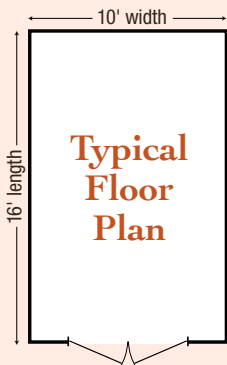
Treated floor plywood is optional on any shed.



DOOR SIZES

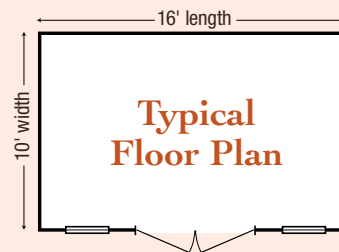
Barns

Width	Door Width
6' (4' wall).....	36"
8' (4' wall).....	50"
8' (5' & 6' walls).....	55"
10'.....	60"
12'.....	72"
14'.....	84"

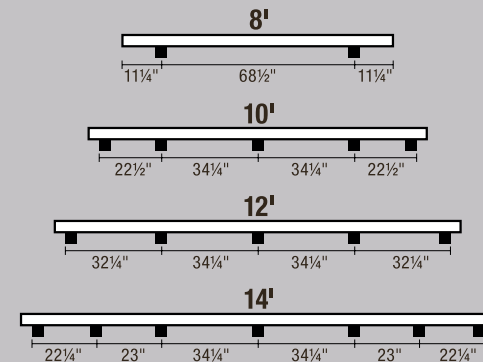


A-Frames, Quakers, Dutches & Cape Cods

Width	Door Width
6' & 8' wide, all doors.....	55"
10' wide x 12' long & under..	55"
10' wide x 14' to 18' long.....	60"
10' wide x 20' long & up.....	72"
12' wide x 12' long & under..	55"
12' wide x 14' long.....	60"
12' wide x 16' long & up.....	72"



SKID PLACEMENT

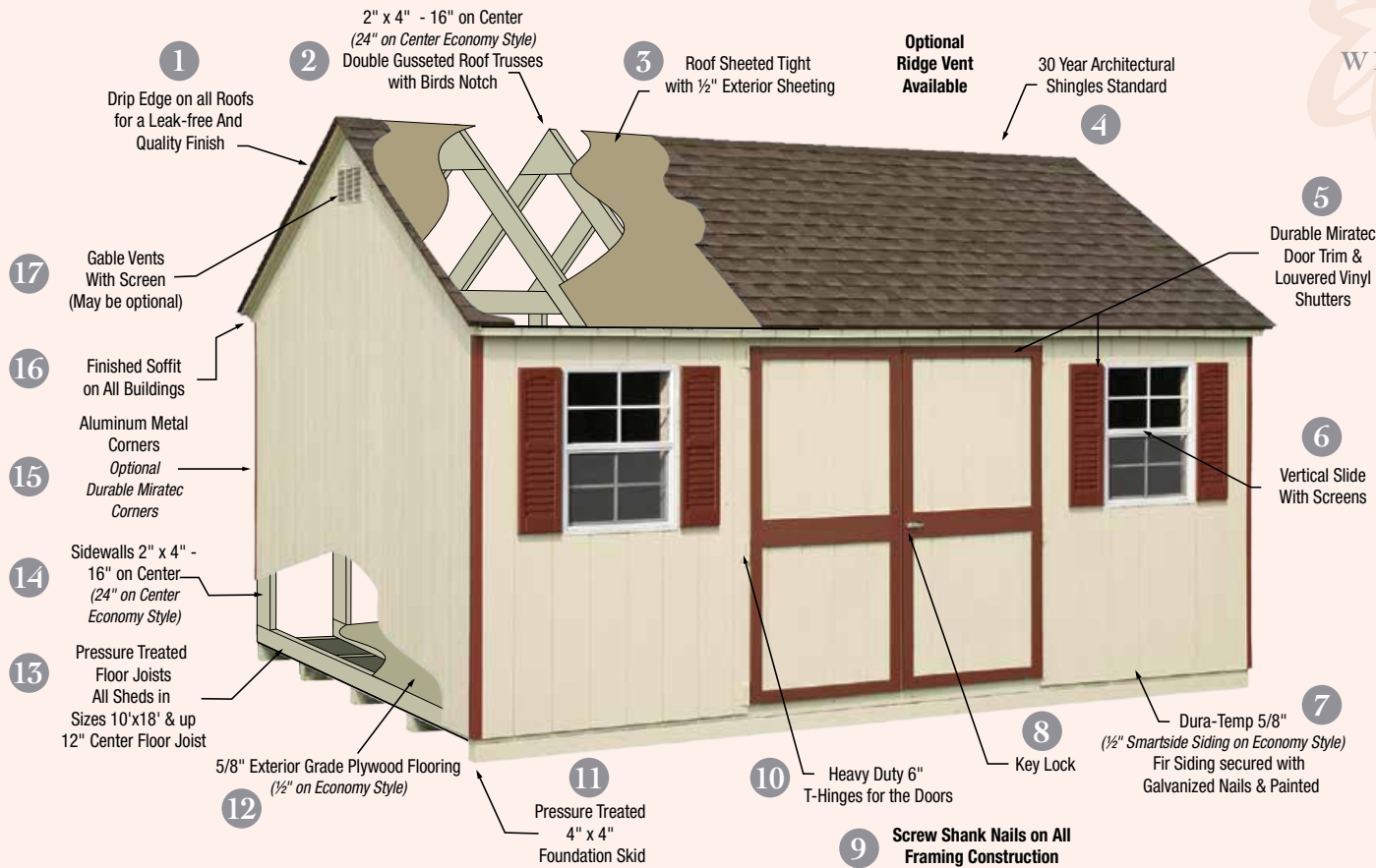


SPECIFICATIONS

Apply to All Sheds Except Economy Styles

DURATEMP SHEDS
COME STANDARD
WITH TREATED FLOOR
JOISTS

Treated floor plywood is optional on any shed.



DURATEMP SHEDS



Interior of Dutch Deluxe Barn

TECHSHIELD™ IS STANDARD ON ALL SHEDS

TechShield™ sheathing blocks 97% of radiant heat in the panel from entering the shed making your structure up to 30° cooler inside in the summer!



Interior shown with TechShield™, workbench, and shelf above



COLOR OPTIONS

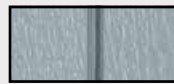
PAINT COLORS for Building, Trim and Shutters



Lite Gray



Dark Gray



Lite Blue



Dark Blue



White



Red



Green



Charcoal



Beige



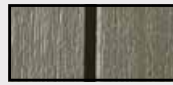
Almond



Clay



Chestnut



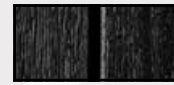
Avocado



Millcreek Green



Navajo White



Black

VINYL COLORS



Red



Khaki



Wicker



Almond



Beige



Sand



Ivory



Olive



Autumn Tan



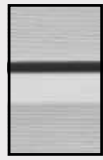
Mist



Slate Blue



Pewter



Stone Gray



White



Navy



Coffee

VINYL TYPES



Ship Lap 4-0



Dutch Lap 4-5

SHINGLE COLORS



Fox Hollow



Green



Weatherwood



Shakewood



Hickory



Black



Pewter



Blue



Slate

URETHANE PAINT COLORS: Semitransparent



Cedar



Chestnut



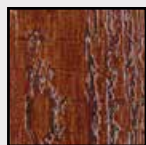
Ebony



Driftwood



Honey Gold



Red Mahogany

