



The
HERITAGE
Series

Home Office Furniture

Enjoy
our
Heritage
in your office



Welcome

The
HERITAGE
Series
the heirlooms of tomorrow

The Heritage Series furniture is handcrafted in the U.S.A. from majestic, solid hardwoods; is incredibly durable, and resists the scars and scratches that quickly deface veneer furniture. The Heritage Series furniture will last a lifetime!

Made from oak, cherry, maple, quarter-sawn white oak, and walnut wood species, this furniture offers you a breath of nature, skillfully crafted into a legacy of quality.

Choose your style for today—your heirloom for tomorrow!

Guarantee

The Heritage Series is backed by a full, one-year guarantee from the date of purchase. If you are not satisfied with your purchase, return the product to the place of purchase, and we will repair or replace it.

Since our product is made of solid wood, it will naturally expand and contract with normal changes in humidity. If a panel splits from normal humidity changes or the finish cracks or blisters, we will replace or repair it at no cost to you up to five years from the date of purchase.

To claim our guarantee, simply return your product to the place of purchase. Shipping and handling charges may apply.

Table of Contents



Order Guide 4

Standard Features 4

Styles 5-11

Desks and Hutches 12-15

Corner Desks and Hutches . . . 16-17

Filing Cabinets 18

Bookcases 19-21

Computer Armoire 22

Secretary Desks 22

Le Chateau 23-26

Queen Anne Secretary Desks 27



Standard Features

- Solid wood construction
- 100 lb. full extension drawer slides
- Dovetailed drawers
- High quality finishes
- Pullout writing trays
- Flip-down kneehole drawer
- Details and choices
- Guaranteed satisfaction
- 1-1/2" Grommet in all desk tops



Full Extension Drawers
Easy access to your files. Drawers are dovetailed for durability.



Dovetail Pigeon Holes
Dovetail pigeon holes add pleasing detail and strengthen the construction.



Kneehole Drawer
Drawer works as both a pencil drawer and a flip-down keyboard drawer.



Mortise & Tenon Joint
Mortise and tenon joints reinforced with screws will last for generations.



Pullout Writing Tray
Pullout writing tray gives you more room to do your work.



Long Lasting Cable
No canvas to wear out or get brittle. Cable with tongue and groove construction is guaranteed for life.

Order Guide

1. Select Style:

- Traditional Flat Sides
- Traditional Panel Sides
- Mission Flat Sides
- Mission Panel Sides
- Shaker Flat Sides
- Contemporary Panel Sides
- Le Chateau
- Queen Anne

2. Select Wood:

- Red Oak
- Maple
- Cherry
- Walnut
- Q.S. White Oak

3. Select Finish:

See separate finish options brochure.

4. Select Hardware:

See options on style pages 5-11.

5. Select Base Desk

6. Optional: Select Roll Top

Must match width and depth of base.

7. Optional: Select Hutch and Hutch Door Styles

Must match width of base.

See door options on style pages 5-11.

Styles

All desk configurations are available in these six styles. Actual sizes vary slightly from style to style. Le Chateau (p. 23) and Queen Anne (p. 27) have unique sizes.



Traditional Flat Sides page 9

- Traditional classic profiles
- Flat solid wood sides (select veneers on backs)
- 1-1/4" thick top edges
- Raised drawer fronts
- Cutouts on baseboard
- Dental and crown moulding on hutches



Traditional Panel Sides page 8

- Traditional classic profiles
- Style and rail with raised panel sides (desks and roll tops have raised back)
- 1-1/4" thick top edges
- Raised drawer fronts
- Cutouts on baseboard
- Dental and crown moulding on hutches



Shaker Flat Sides page 6

- Flat solid wood sides (select veneers on backs)
- 1-1/4" thick top edges
- Shaker drawer fronts
- Shaker cut at base
- Shaker crown moulding on hutches



Mission Flat Sides page 10

- Flat solid wood sides (select veneers on backs)
- 1-1/4" thick top edges
- Mission drawer fronts
- Mission cut at base
- Mission crown moulding on hutches



Mission Panel Sides page 11

- Style and rail with inset panel sides (desks and roll tops have inset panel back)
- 1-1/4" thick top edges
- Mission drawer fronts
- Mission cut at base
- Mission crown moulding on hutches



Contemporary Panel Sides page 7

- Style and rail with panel sides (select veneers on backs)
- 3/4" thick floating top
- Inset drawer fronts
- Square tapered legs at base
- 3/4" thick floating top on hutches

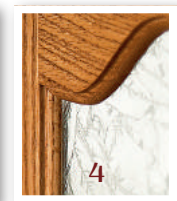
Optional Distressed Finishes

Hutch and Bookcase Options

1. Glass shelves
2. Touch switch lights
3. Solid wood, tongue and groove back

Glass Options

1. Regular (standard)
2. Beveled
3. Seedy
4. Glue Chip





Shaker



Shaker and Contemporary
Doors and Hardware

10SG
Shaker Door
with Glass

10SP
Shaker
Wooden Door

10CG
Contemporary
Door with Glass

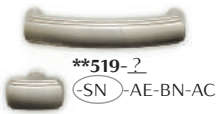
10CP
Contemporary
Wooden Door



521-SN



N118-2
-Cherry -Oak-Walnut



**519-2
-SN -AE-BN-AC



*400-SN



**489-2
-SN -BL-ORB



521-BL



**115-2
-AC -SN-BN-AE



**519-AC



**420-PWT



***281-2
-ORB -SN

Contemporary



* Group 1 hardware
** Group 2 hardware
*** Group 3 hardware
Upcharge may apply

Traditional Panel Sides



Traditional Doors and Hardware



10TG
Square Glass



10TP
Raised Panel



20TG
Standard Glass



20TGM
Mullion Glass



152-AE



*644-AE



*BW9-2
-Oak -Cherry
-Walnut -Maple



*K235-2
(BB) -SN-ORB



5261-2 (SN) -BL-SI-ORB



K200-LP



*981-2
(SN) -BL-AB-ORB



***582-2
(ORB) -SN-WID-BL



590-2
(ORB) -SN-SI-BL



***323-2 (BL) -WN-ORB



580-2
(SI) -BL-AB-ORB



**130-2
(WN) -BL-ORB

Traditional Flat Sides



* Group 1 hardware
** Group 2 hardware
*** Group 3 hardware
Upcharge may apply



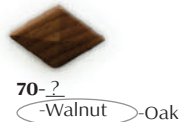
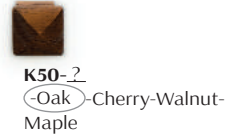
Mission Flat Sides



Mission
Doors and Hardware

10MG
Mission Door
with Glass

10MP
Mission
Wooden door



Mission Panel Sides



* Group 1 hardware
** Group 2 hardware
*** Group 3 hardware
Upcharge may apply

Desks & Tables



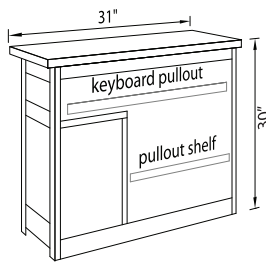
3120K4
Traditional Flat Sides in Oak



40D1
Traditional Flat Sides in Oak



3124D8
Traditional Flat Sides in Oak



Computer Stands 31" Wide

3120K4 30"h x 31"w x 20"d
3124K4 30"h x 31"w x 24"d

31" Wide with Doors

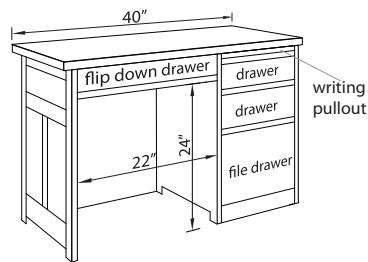
3120K4D 30"h x 31"w x 20"d
3124K4D 30"h x 31"w x 24"d

Computer Stands 40" Wide

4020K4 30"h x 40"w x 20"d
4024K4 30"h x 40"w x 24"d

40" Wide with Doors

4020K4D 30"h x 40"w x 20"d
4024K4D 30"h x 40"w x 24"d



Writing Desk 40" Wide

40D1 30"h x 40"w x 27"d

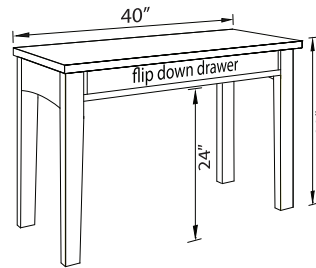
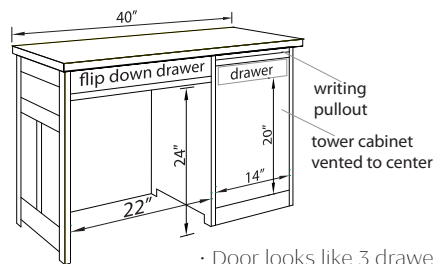


Table Desks 31" Wide

3120D8 30"h x 31"w x 20"d
3124D8 30"h x 31"w x 24"d

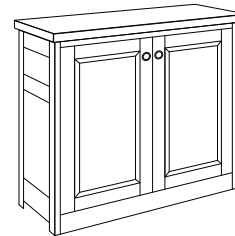
Table Desks 40" Wide

4024D8 30"h x 40"w x 24"d
40D8 30"h x 40"w x 27"d



Computer Desk 40" Wide

40D3 30"h x 40"w x 27"d



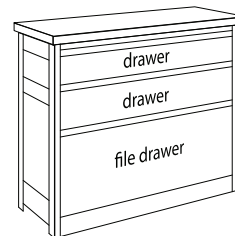
1 Adjustable shelf inside

Credenza Bases 31" Wide

31K1 30"h x 31"w x 20"d
3124K1 30"h x 31"w x 24"d

Credenza Bases 40" Wide

40K1 30"h x 40"w x 20"d
4024K1 30"h x 40"w x 24"d



Drawer Cabinets 31" Wide

3120D1 30"h x 31"w x 20"d
3124D1 30"h x 31"w x 24"d

Laptop Stands



Laptop Stands with Drawer

23L2 28"h x 23"w x 17"d
27L2 28"h x 27"w x 17"d

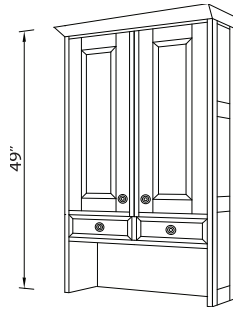


Laptop Stands

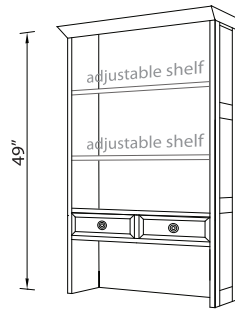
23L1 28"h x 23"w x 17"d
27L1 28"h x 27"w x 17"d

Hutch Wings

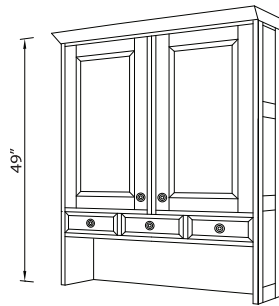
Order Left or Right



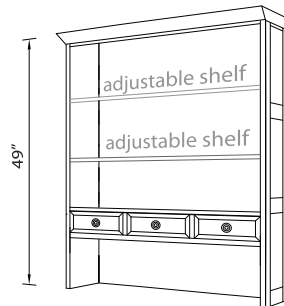
25WH4 49"h x 25"w x 14"d
Adjustable shelves inside



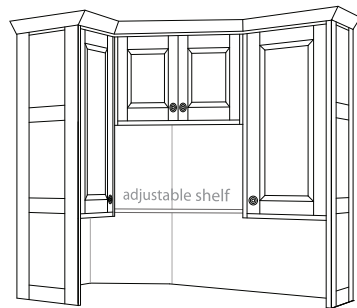
25WH6 49"h x 25"w x 14"d



35WH4 49"h x 35"w x 14"d
Adjustable shelves inside



35WH6 49"h x 35"w x 14"d



41CH2 49"h x 41"w x 41"d
Adjustable shelves inside

Corner Desk Hutches



Base: 41C in Center, 25W3 on Left & 25W1 on Right
Hutches: 41CH2 in Center, 25WH4 on Left & None on Right
Traditional Flat Sides in Oak



Base: 41C in Center, 35W3 on Left & 25W2 on Right
Hutches: 41CH2 in Center
Traditional Flat Sides in Oak

Filing Cabinets



31F2
Traditional Flat Sides in Cherry

Lateral Filing Cabinets

- 31F2** 30"h x 31"w x 20"d – Two drawer
- 31F3** 41"h x 31"w x 20"d – Three drawer
- 31F4** 53"h x 31"w x 20"d – Four drawer

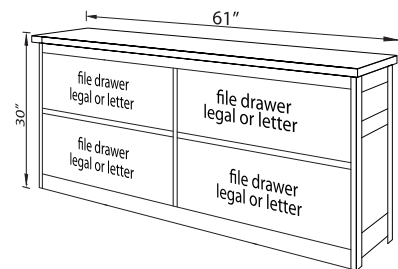
Anti-tip Feature

Standard on lateral filing cabinets.
Allows only one drawer to be opened at a time.



31F3
Traditional Flat Sides in Oak

31F4
Traditional Panel Sides in Oak



61F2 30"h x 61"w x 20"d
(See page 15 for hutch)



17F4

17F3

Traditional Flat Sides in Oak

17F2

Filing Cabinets

- 17F2** 30"h x 17-1/2"w x 27"d – Two drawer letter
- 20F2** 30"h x 20-1/2"w x 27"d – Two drawer legal
- 17F3** 46"h x 17-1/2"w x 27"d – Three & one half drawer letter
- 20F3** 46"h x 20-1/2"w x 27"d – Three & one half drawer legal
- 17F4** 53"h x 17-1/2"w x 27"d – Four drawer letter
- 20F4** 53"h x 20-1/2"w x 27"d – Four drawer legal



31F2 & 31 H4
Traditional Flat Sides in Oak
2 Adjustable shelves inside

Hutch for Filing Cabinet
31H4 49"h x 31"w x 14"d



31F2 & 31 BH3
Mission Panel Sides in Q.S.Oak

Barrister Hutch for Filing Cabinet
31BH3 48"h x 31"w x 14"d

Barrister Book Cases



31BB3
Traditional Flat Sides in Oak

31BB3 48"h x 31"w x 14"d – three doors high

31BB4 62"h x 31"w x 14"d – four doors high

31BB5 78"h x 31"w x 14"d – five doors high

Choose Door Type:

Glass or panel

Bottom door is panel unless noted differently

Bookcases

Choose Door Type:
Glass or panel
Bottom door is panel unless noted differently



- 21" Wide Bookcases with Doors**
21B1D 30"h x 21"w x 14"d
21B2D 41"h x 21"w x 14"d
21B3D 53"h x 21"w x 14"d
21B4D 65"h x 21"w x 14"d
*21B5D 78"h x 21"w x 14"d
*21B5DD 78"h x 21"w x 14"d

- 32" Wide Bookcases with Doors**
32B1D 30"h x 32"w x 14"d
32B2D 41"h x 32"w x 14"d
32B3D 53"h x 32"w x 14"d
32B4D 65"h x 32"w x 14"d
*32B5D 78"h x 32"w x 14"d
*32B5DD 78"h x 32"w x 14"d

- 47" Wide Bookcases with Doors**
47B1D 30"h x 47"w x 14"d
47B2D 41"h x 47"w x 14"d
47B3D 53"h x 47"w x 14"d
47B4D 65"h x 47"w x 14"d
*47B5D 78"h x 47"w x 14"d
*47B5DD 78"h x 47"w x 14"d

*Has crown instead of flat top



Traditional Panel – shown with optional tongue and groove back



- 21" Wide Bookcases**
21B1 30"h x 21"w x 14"d
21B2 41"h x 21"w x 14"d
21B3 53"h x 21"w x 14"d
*21B4 65"h x 21"w x 14"d
*21B5 78"h x 21"w x 14"d

- 32" Wide Bookcases**
32B1 30"h x 32"w x 14"d
32B2 41"h x 32"w x 14"d
32B3 53"h x 32"w x 14"d
*32B4 65"h x 32"w x 14"d
*32B5 78"h x 32"w x 14"d

- 47" Wide Bookcases**
47B1 30"h x 47"w x 14"d
47B2 41"h x 47"w x 14"d
47B3 53"h x 47"w x 14"d
*47B4 65"h x 47"w x 14"d
* 47B5 78"h x 47"w x 14"d

Wall Unit

Bookcase Crown

31CR2 3-1/2" h x 41" w x 17" d

40CR2 3-1/2" h x 50" w x 17" d

55CR2 3-1/2" h x 65" w x 17" d

61CR2 3-1/2" h x 70" w x 17" d

70CR2 3-1/2" h x 80" w x 17" d



3120K4D in Center, 32B5D on Left & 32B5D on Right
with 31CR2 for Crown
Traditional Flat Sides in Oak

Configuration is up to YOUR imagination.

These units are custom fitted, and can be made to fit against a side wall upon request.

When ordering a wall unit choose:

1. **Center:** can be a regular desk, a credenza, or a computer center
2. **Left bookcase:** your choice
3. **Right bookcase:** your choice
4. **Crown:** optional

Computer Armoire



481
Traditional Flat Sides in Oak

Computer Armoire Center

- 481 72 "h x 33"w x 22"d
- Folddown work station
 - One adjustable shelf in top
 - CD rack on door
 - Pullout printer shelf in bottom with removable file drawer
 - Pullout keyboard tray



Auto extend & retract support

Secretary Desk

- 540 Secretary desk with regular drawers
43"h x 41"w x 21"d
- 542 Secretary desk with file drawer
(bottom file drawer looks like two drawers)
43"h x 41"w x 21"d
- 41H7 Hutch for secretary desk
37"h x 41"w x 14"d



542
Traditional Flat Sides in Oak

540 & 41H7
Traditional Flat Sides in Oak

Le Chateau



Concealed drawers
behind mouldings

Le Chateau pages 23-27

- Style and rail with inset panel sides
- 3/4" Thick tops with round corners
- Inset drawer fronts
- Wrapped moulding at base
- Wrapped crown moulding on hutches





L55D1
in Cherry



L55D3
in Cherry

Writing Desk

- L55D1 30"h x 56"w x 27"d
- L61D1 30"h x 61"w x 30"d
- L70D1 30"h x 71"w x 30"d



Custom Corner Desk
in Walnut

Writing tray slides
inside top drawer

Computer Desk

- L55D3 30"h x 56"w x 27"d
- L61D3 30"h x 61"w x 30"d
- L70D3 30"h x 71"w x 30"d

Bow Front Upgrade for 27" Deep Desks

(not shown) – see p. 14A
10" Top overhang, baseboard on all sides
L55VT x 56"w x 36"d
L61VT x 61"w x 36"d
L70VT x 71"w x 36"d



***304-SN



***304-ORB



****875-ORB



**5219-2
(ORB)-SN-WID-MB



**613-DP



**613-AC

** Group 2 hardware
*** Group 3 hardware
**** Group 4 hardware
Upcharge may apply

Hutch for Flat Desk

- L55H2 51" h x 56" w x 14" d
- L61H2 51" h x 61" w x 14" d
- L70H2 51" h x 71" w x 14" d



L61D1 & L61H2
in Cherry

Hutch for Roll Top

- L55H3 31" h x 56" w x 14" d
- L61H3 31" h x 61" w x 14" d
- L70H3 31" h x 71" w x 14" d



L61H3
in Cherry

Roll Top with Light

- L55R5 20" h x 56" w x 27" d
- L61R5 22" h x 61" w x 30" d
- L70R5 22" h x 71" w x 30" d

Computer Roll Top

- (not shown)
- L55R3 26" h x 56" w x 27" d
- L61R3 28" h x 61" w x 30" d
- L70R3 28" h x 71" w x 30" d

Open Hutch

- L55H9 23" h x 56" w x 14" d
- L61H9 23" h x 61" w x 14" d
- L70H9 23" h x 71" w x 14" d



L70D1 & L70H9
in Walnut



L55D1 & L55R5
in Cherry

Le Chateau



L33B3
in Cherry

Le Chateau Bookcases 33" Wide

- L33B1 35"h x 33"w x 15"d
- L33B2 45"h x 33"w x 15"d
- L33B3 58"h x 33"w x 15"d
- *L33B5 81"h x 33"w x 15"d

33" Wide with Doors

- L33B1D 35"h x 33"w x 15"d
- L33B2D 45"h x 33"w x 15"d
- L33B3D 58"h x 33"w x 15"d
- *L33B5D 81"h x 33"w x 15"d

Le Chateau Bookcases 49" Wide

- L47B1 35"h x 49"w x 15"d
- L47B2 45"h x 49"w x 15"d
- L47B3 58"h x 49"w x 15"d
- *L47B5 81"h x 49"w x 15"d

49" Wide With Doors

- L47B1D 35"h x 49"w x 15"d
- L47B2D 45"h x 49"w x 15"d
- L47B3D 58"h x 49"w x 15"d
- *L47B5D 81"h x 49"w x 15"d

*Has no concealed drawer behind moulding



L20F2
in Cherry

Filing Cabinets

- L20F2 35"h x 20"w x 27"d – Two drawer letter
- L23F2 35"h x 23"w x 27"d – Two drawer legal

- L20F3 46"h x 20"w x 27"d – Three drawer letter
- L23F3 46"h x 23"w x 27"d – Three drawer legal

- L20F4 58"h x 20"w x 27"d – Four drawer letter
- L23F4 58"h x 23"w x 27"d – Four drawer legal

Lateral Filing Cabinets

- L33F2 35"h x 33"w x 21"d – Two drawer
- L33F3 46"h x 33"w x 21"d – Three drawer
- L33F4 58"h x 33"w x 21"d – Four drawer

Anti-tip Feature

Standard on lateral filing cabinets.
Allows only one drawer to be opened at a time.



Queen Anne Hutch for Secretary Desk
Q31H5 37"h x 33"w x 14"d

Queen Anne Hutch for Flat Top Desk
(not shown)
Q31H4 50"h x 33"w x 14"d



Queen Anne Secretary Desk
Q31D3 43"h x 33"w x 21"d



Queen Anne Hall Desk
Q31D1 30"h x 33"w x 21"d

Queen Anne

Secretary

Desks



Q31D3 & Q31H5
in Cherry

Embellish

your home office



Experience

the beauty of hardwood office furniture

Made in USA



Version #12